

INTRODUCTION:

The Florida Department of Transportation (FDOT), District Four, is conducting a Project Development and Environment (PD&E) Study for I-95 at Southern Boulevard (SR 80) Interchange in Palm Beach County. The study area extends along Southern Boulevard from Australian Avenue on the west side, to Parker Avenue on the east side of the interchange.

The purpose of the study is to enhance overall traffic operations and improve the Level of Service (LOS) at the existing interchange to accommodate projected travel demand. The study will also consider Strategic Intermodal System (SIS) connector improvements needed within the project area and will be consistent with future plans for I-95, including the potential extension of express lanes through Palm Beach County.

PUBLIC KICK-OFF MEETING:

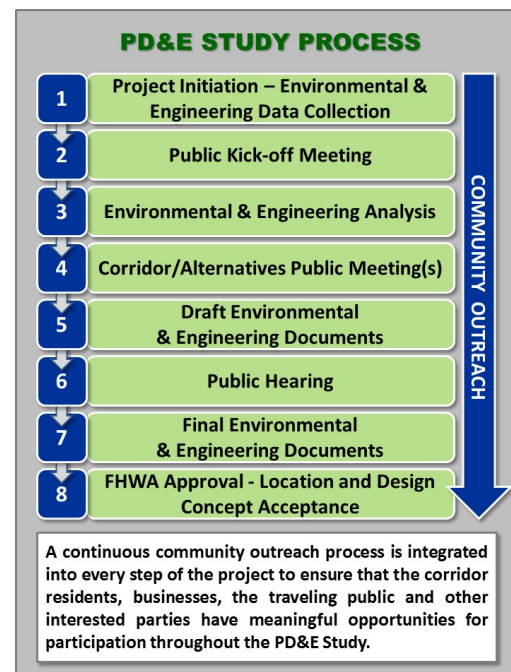
A Public Kick-off Meeting has been scheduled to provide an opportunity for you to learn about the project, become familiar with the study process, and provide initial feedback. This meeting will be held in an informal, open-house format with a brief presentation to provide an overview of the study process, and existing conditions. FDOT and project team members will be available to discuss the project and answer questions.



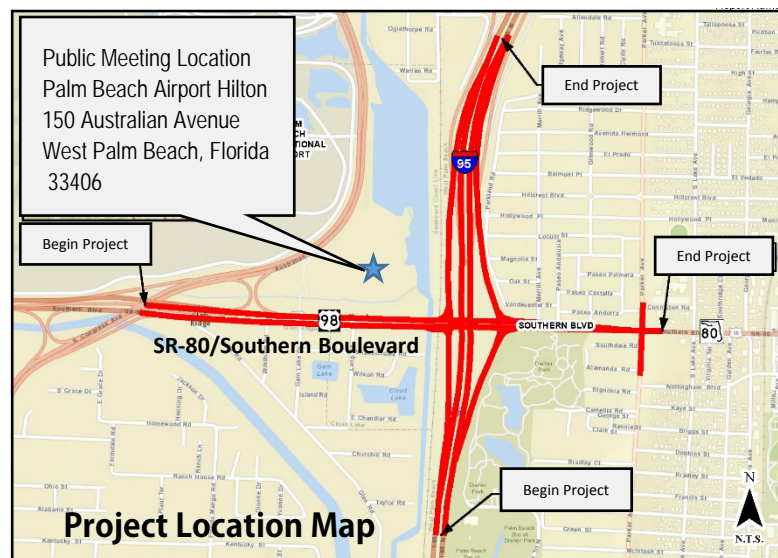
Date: Tuesday, November 17
Time: From 5:30 p.m. to 7:30 p.m.
 Presentation at 6:30 p.m.
Location: Palm Beach Airport Hilton
 150 Australian Avenue
 West Palm Beach, Florida 33406

WHAT IS A PD&E STUDY?

A Project Development and Environment (PD&E) Study is a process conducted by the Florida Department of Transportation (FDOT) to determine the environmental, social and economic impacts that are associated with proposed transportation improvements. The process, mandated by the National Environmental Policy Act (NEPA),



is a combined effort by professional engineers, planners, environmental scientists and others who analyze the project related information to develop the best alternative for a community's transportation needs.



Why Do We Need This Study?

The purpose of this project is to enhance overall traffic operations at the existing interchange of I-95 and Southern Boulevard (SR 80) by providing improvements to achieve acceptable Levels of Service (LOS) at the interchange in the future condition (2040 Design Year). Conditions along Southern Boulevard are anticipated to deteriorate below acceptable LOS standards if no improvements occur by 2040. The interchanges will have insufficient capacity to accommodate the projected travel demand. The need for the project is based on capacity and transportation demand, accommodating future growth and development, and to improve safety conditions and emergency evacuation response and times.

What Does Level of Service Mean?

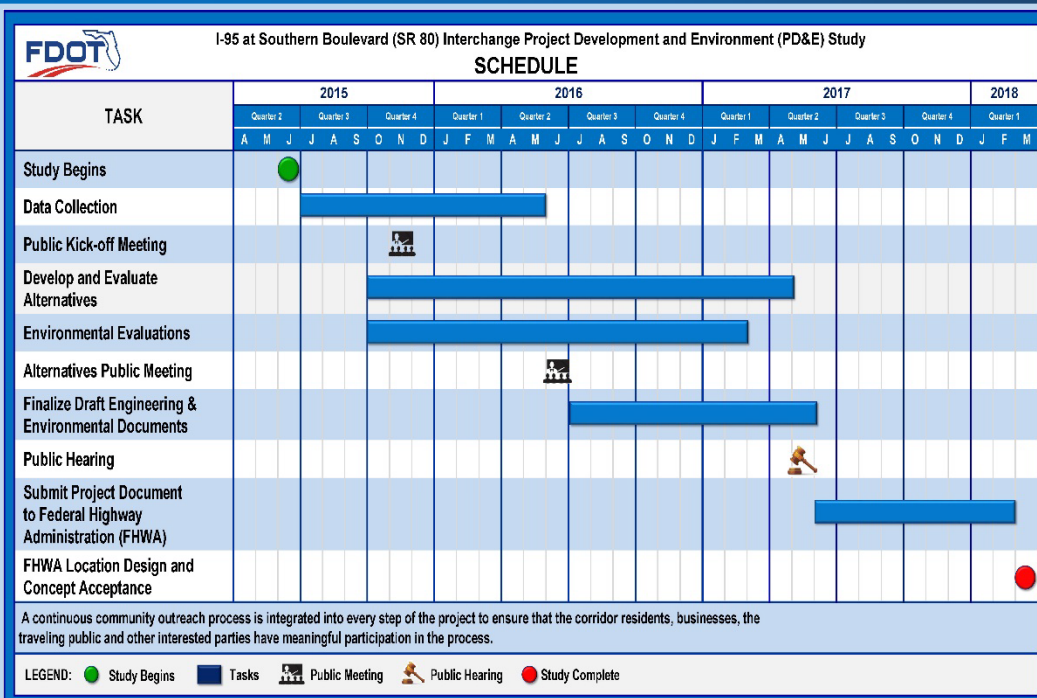
Level of Service (LOS) is a measure of the operating conditions of a roadway and the perception of these conditions by the motorists.

How Can You Get Involved?

There is no need to wait until a public meeting to provide your input. Public comments and questions are welcomed at any time throughout the study. Please contact us to schedule a small group meeting with your neighborhood or special interest group.

Public Notice:

Public participation is solicited without regard to race, color, national origin, age, sex, religion, disability, or family status. Persons who require special accommodations under the Americans with Disabilities Act, or persons who require translation services (free of charge), should contact Anson Sonnett, P.E., FDOT Project Manager, by phone at 954-777-4474 or toll free at 1-866-336-8435 ext. 4474 or by email at anson.sonnnett@dot.state.fl.us at least seven days prior to the meeting. If you are hearing or speech impaired, please contact us by using the Florida Relay Service: 1-800-955-8771 (TDD) or 1-800-955-8770 (voice).



For more information, please contact one of the following:

Anson Sonnett, P.E.
 FDOT District Four Project Manager
 3400 Commercial Boulevard
 Fort Lauderdale, Florida 33309
 Phone: 954-777-4474
 Toll Free: 1-866-336-8435 ext. 4474
anson.sonnnett@dot.state.fl.us

Cassie Piché, P.E.
 RS&H Consultant Project Manager
 3125 West Commercial Boulevard
 Suite 130
 Fort Lauderdale, Florida 33309
 Phone: 954-236-7365
cassie.piche@rsandh.com

The PD&E Study is anticipated to be complete in March 2018